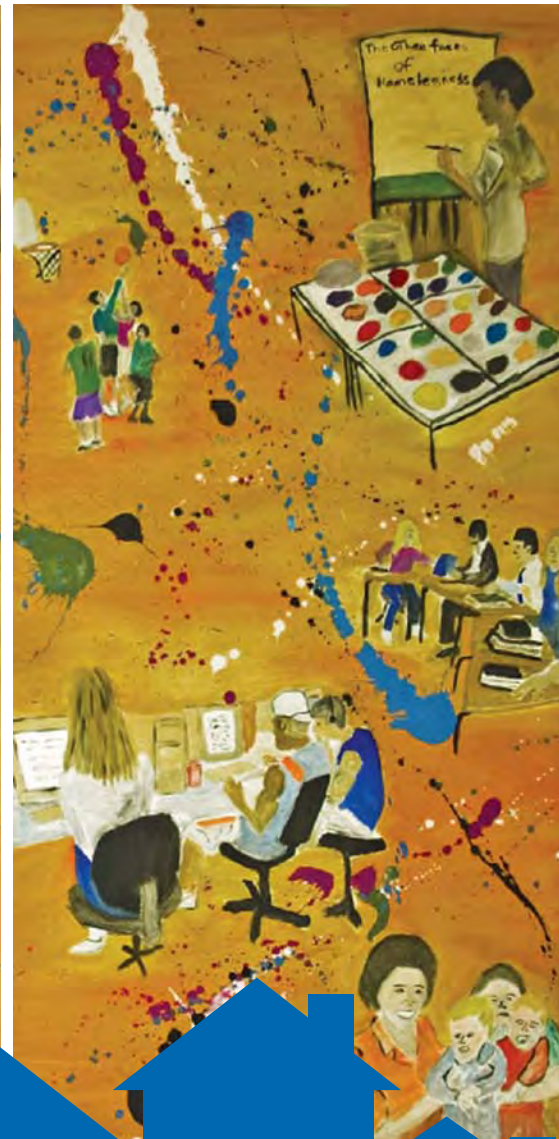




montgomery county  
coalition for the homeless



# Faces of Homelessness

# Contents

The Montgomery County Coalition for the Homeless leads the effort to end homelessness in our community by creating housing options, providing supportive services, and facilitating collaboration, education and advocacy based on the belief that every person is entitled to the dignity of a home.

From the Executive Director and Board Chair .....	2
Program Activities	
Breaking Down Barriers.....	3
Homeless Outreach Project.....	4
Hope Housing.....	5
Men’s Emergency Shelter.....	6
Partnership for Permanent Housing.....	7
Safe Havens.....	8
Seneca Heights Apartments.....	9
Public Education.....	10
Advocacy.....	11
Events.....	12
Financial Statement.....	13-14
Coalition Supporters .....	15-16
Coalition Board of Directors.....	17
Coalition Staff.....	18



Cover: *Faces of Homelessness* painting was created by Barry Alston, tenant of the Partnership for Permanent Housing and former tenant of Seneca Heights Apartments.



# From the Executive Director and Board Chair

---

Dear Friends,

The past year has been filled with excitement and purpose at the Montgomery County Coalition for the Homeless. Continuing our mission of *Solving Housing Crises and Striving to End Homelessness*, the Coalition provided a vast array of housing options and supportive services to men, women and children experiencing homelessness in our community.

Challenged by the ever-increasing cost of housing and a greater number of homeless individuals and families, the Coalition expanded its programmatic efforts in several directions:

- Breaking Down Barriers was created in the fall of 2005 to meet the needs of those people who, once they overcome their barriers to housing, are able to remain housed and live full, independent lives.
- The Homeless Outreach Project was initiated in the spring of 2006 to locate, engage, and house homeless individuals living on the streets, many of whom have been homeless for long periods of time and face a variety of disabilities.
- Funding was secured from the County Council to more than double the capacity of the Partnership for Permanent Housing program in fiscal year 2007 and to expand its mission to serve not only homeless families, but also single adults and couples without children.
- The Coalition created an affiliate organization, Coalition Homes, Inc., to own and manage property providing permanent housing for the homeless. Six efficiency units were purchased and became homes for mentally ill, formerly homeless adults who had been stabilized in residential rehabilitation programs.

The variety of housing options and services the Coalition provides reflects the diversity of people who experience homelessness. When thinking of a homeless person, one often finds oneself envisioning a frail man huddling beneath a blanket on a city street. The reality is that there is no one face of homelessness, but rather many faces with their own unique set of experiences, needs and dreams.

Over the course of a year more than 4,000 people experience homelessness in our community, of which 1,000 are children. We are proud to have served nearly 1,500 of these men, women and children over the past year. As you read this report filled with the Coalition's accomplishments, please remember that behind each statistic, story and picture – each face of homelessness – is a person entitled to the dignity of a home.

A heartfelt thanks to all our partners and supporters, for without your help, we will never realize the vision of a Montgomery County without homelessness.

*Sharan London*

Sharan London  
Executive Director



*Dan Mahoney*

Dan Mahoney  
Board Chair



# Breaking Down Barriers

Created in the fall of 2005, Breaking Down Barriers strives to facilitate rapid re-housing of newly homeless families and single adults by quickly identifying the barriers that keep them from housing and providing assistance to help them overcome these obstacles. This program, staffed by a Housing Solutions Specialist, reduces time spent in shelters and decreases the length of time families and single adults are homeless, which in turn, helps avoid the many negative effects of prolonged homelessness.



## PROGRAM STATS

(8 months)

Total single adults served: 60

Total families served: 13

Successfully housed:

7 singles

4 families

Total of 21 people

Services provided include: processing of credit reports and rental histories, housing contacts, application fees, holding fees, moving fees, expedited DHHS emergency services, security deposits, first month's rent and ongoing rental subsidies.

## A Face of Homelessness: Jean

Jean had continued working despite increasingly severe back problems. As her medical problems increased she missed work, which led to loss of employment, rent shortfalls and eventually eviction. Jean ended up in a homeless shelter with her 12-year-old son and 9-year-old daughter, who has Down syndrome. The family had obtained a year-long subsidy from the Maryland Rental Allowance Program before entering the program. Because of the relationships BDB developed in the community, the Housing Solutions Specialist was able to locate an apartment complex willing to work with Jean's negative rental history. The Coalition also paid the application fee, security deposit, and part of the cost of moving her belongings from storage to her new apartment – money Jean simply did not have.

The struggle is not over for Jean's family, as she continues searching for work that can accommodate her back trouble and provide sufficient income. But in mid-July she and her children were able to attend their family reunion in Pennsylvania. Most importantly, in the fall the children will attend the same schools they did last year, and at the end of the day, return to a real home.

# Homeless Outreach Project

The Homeless Outreach Project, initiated in the spring of 2006, locates and engages individuals living on the streets who are desperately in need of housing and supportive services yet are often hard to engage. The Outreach Case Manager works to place these individuals in transitional or emergency shelters and, where possible, directly into permanent housing programs. Clients are also assisted in applying for entitlements and referred to a variety of community resources.



## A Face of Homelessness: Stephen

Stephen lived on the streets of Silver Spring for years suffering from paranoid schizophrenia. The Outreach Case Manager first met Stephen at a day program where he would go for a meal and shower. Despite several attempts to encourage him to enter a shelter, Stephen remained reluctant. After an episode left him hospitalized, the Outreach Case Manager was able to get Stephen to accept help and enter the Safe Havens program.

Stephen did well at Safe Havens until he stopped taking his medication and began leaving the shelter for prolonged periods of time. Working diligently with Stephen despite the setbacks caused by his illness, the Outreach Case Manager helped him to settle back into the Safe Havens program and get back on his medication. Today, because of the Outreach Case Manager's encouragement, Stephen is currently recovering and staying off the streets.

## PROGRAM STATS

(3 months)

Individuals engaged: 40

Ongoing relationships: 32

Housed or sheltered: 4

Referrals made for:  
clothing, food, ongoing  
case management, the  
Rental Allowance Program,  
and assistance with  
securing benefits.

# Hope Housing

Hope Housing, a permanent supportive housing program for formerly homeless adults and families with disabilities, is a partnership between the Coalition and three collaborating community agencies. Community Ministries of Rockville, Community Ministry of Montgomery County, and Stepping Stones Shelter provide the direct services to 40 individuals and 2 families, while the Coalition coordinates and oversees the operations and finances. Services to Hope Housing clients include case management, counseling, life skills training, childcare, tutoring, and connection to medical care, vocational counseling, mental health and substance abuse services.



## A Face of Homelessness: Nikki

Nikki came to the Hope Housing program upon completing treatment in May 2003 after years of chronic substance abuse and bouts of homelessness. Not long after her treatment was completed, Nikki was referred to a food service training program. Nikki obtained her certification in food service management and has since been employed full-time as a food service manager at a local treatment center. Nikki is also hoping to obtain her GED soon and has begun working with a therapist on emotional issues from her past that she has had difficulty facing.

Nikki's determination and ability to take leadership of her life eventually secured her the position of house manager at her residence in the Hope Housing program. With her new responsibilities, Nikki conducts house meetings with other residents. "I love my job because it gives me the chance to help those walking in my footsteps," she says.

## PROGRAM STATS

Single adults housed: 55

Families housed: 2

Children: 6

Increased income through employment or benefits: 73%

Participation in skills groups: 60%

Participation in house meetings: 91%

Participation in goal planning: 100%

Remained in housing over one year: 95%

# Men's Emergency Shelter

The Men's Emergency Shelter provides year-round, overnight refuge to over 850 men experiencing homelessness in our community each year. In addition to basic amenities such as showers, bunks and dining facilities, case management and other critical supportive services are available to residents. The shelter also provides a treatment track for clients who are awaiting placement in another shelter or housing program or for clients who are considered particularly vulnerable, but are not eligible for other programs. In the winter, 135 beds are available with overflow beds created as needed. In the summer, 60 beds are open to clients continuing on the treatment track as well as for the most vulnerable men.



## A Face of Homelessness: Jack

Jack came to the Men's Emergency Shelter in 2003 after living on the streets for months battling a drug addiction. A few years earlier, Jack graduated from the University of Maryland and excelled in Division I sports. Unfortunately, he struggled with a mild addiction to prescription drugs and painkillers, which worsened after he underwent two serious spinal surgeries for sports-related injuries. He found it difficult to hold a job and afford housing and soon became homeless.

With the help and dedication of the Men's Emergency Shelter staff, Jack was able to overcome his 6-year struggle with drug addiction and landed a part-time job at the shelter. Eventually, Jack was able to get back on his feet and found work as a full-time swimming director. Now, he visits the shelter regularly not only for supportive services, but also to offer advice to shelter residents. Grateful for the guidance he received at the Men's Emergency Shelter, Jack says that the experience has "taught me how to live life on life's terms."

## PROGRAM STATS

Bednights: 34,364

Men served: 850

Average length of stay: 40 nights

Participated in case management: 503

Utilized bilingual case management: 60

Moved to more permanent housing: 93

# Partnership for Permanent Housing

The Partnership for Permanent Housing (PPH) is a collaborative program with county government, the Housing Opportunities Commission, and private foundations. As the county's pilot "Housing First" initiative, PPH combines the case management component of transitional housing programs with quicker access to permanent housing by providing subsidized housing and supportive services to families experiencing homelessness. Initially, case management is provided on a weekly basis, but diminishes significantly over time as a family increases its self-sufficiency.



## A Face of Homelessness: Rebecca

Rebecca entered the Partnership for Permanent Housing with her son and, later on, another child directly from a homeless shelter. Although Rebecca had overcome various childhood obstacles that had left her impoverished and even in foster care, she faced many more difficulties later on in her life, including domestic violence, that led her to relocate from her hometown to Maryland.

Rebecca is very grateful for the Partnership for Permanent Housing and continues to make great strides in increasing her self-sufficiency and providing better opportunities for her son and daughter. In 2006, Rebecca accepted a job with AmeriCorps VISTA as an Event Planner and Community Outreach Coordinator for another nonprofit organization. Rebecca is also the editor of PPH's quarterly newsletter – a role of which she is proud, explaining, "I feel that I am truly at my best when I am able to help others."

## PROGRAM STATS

Families housed: 55

Adults served: 61

Children served: 146

Adults employed: 62%

Adults receiving benefits: 28%

Families who successfully maintained housing: 100%

Housed 3 years or more:  
21 families

Housed 2 years or more:  
24 families

Housed 1 year or less:  
10 families

Families relocating out of program successfully: 7

# Safe Havens

Safe Havens is a low-demand transitional housing program for 40 mentally ill, homeless adults. This population is often the most difficult to engage in treatment and is generally not successful in other group or shelter environments. Safe Havens provides case management, counseling, life skills development, weekly on-site psychiatric services, and connections to medical care, vocational training, and day treatment programs. The ultimate goal of the Safe Havens program is to help clients transition to a more independent, permanent and healthy living situation.



## A Face of Homelessness: Beth

Two years ago, Beth was sleeping on park benches, suffering from severe mental illness, and afraid to ask for the help she needed. When she was referred to the Safe Havens program, it was evident that her schizophrenia was her main roadblock in finding stable housing. Despite experiencing several setbacks during the course of her stay, Beth was determined to take control of her mental illness and have a place to call home again.

The staff at the Maplewood Safe Havens worked together to help Beth find tolerable medications and develop methods for managing her mental illness in daily life. Since her acceptance into the Safe Havens program, Beth is working part-time, receiving social security payments and has moved into her own apartment. "I owe most of my success in achieving a more viable lifestyle to the dedicated staff of Safe Havens. With all of the assistance I received, I feel confident that I will remain as stable as possible with my illness and off the streets," she says.

## PROGRAM STATS

Safe Havens: 4

Individuals housed: 54

Individuals who moved to permanent housing: 13

Individuals connected to supportive services for the first time: 10

Individuals who started or restarted receiving benefits: 7

Individuals engaged in treatment programs: 40

## PROGRAM STATS

### SHA Personal Living Quarters

Individuals housed: 45

Tenants with chronic serious health conditions: 21

Tenants who maintained full- or part-time employment: 17

Tenants who enrolled in school/classes: 8

Tenants who engaged in mental health treatment: 24

Tenants who engaged in substance abuse treatment: 18



### SHA Transitional Housing

Families housed: 26

Adults served: 28

Children served: 52

Families successfully relocated: 10

Average income increase: 42%

Parents who entered with no employment and obtained work: 6

Parents who maintained full- or part-time employment: 25

Parents in school/classes: 7

Parents who participated in job training: 9

Parents engaged in substance abuse treatment: 7

Parents engaged in mental health treatment: 5

# Seneca Heights Apartments

Seneca Heights Apartments (SHA) opened in the summer of 2004 after several years of advocacy to extend the zoning laws permitting Personal Living Quarters in Montgomery County. The Coalition partnered with a number of county agencies to renovate a former Econolodge in Gaithersburg. An award winning, innovative model combining housing, services and amenities, Seneca Heights Apartments serves as permanent housing for 40 single adults moving from shelters to independent living quarters and as transitional housing for 17 families who are preparing to move to a permanent home. All tenants receive on-site case management and social services as well as the opportunity to engage in a wide variety of community events and activities.

## A Face of Homelessness: Bill

Bill entered into homelessness when injuries from an automobile accident left him unable to work, causing him to lose his home. After spending time at the Men's Emergency Shelter throughout the next three years, Bill came to Seneca Heights Apartments in 2006.

Bill was very active in the community events at Seneca Heights and when he was not working as a cook at the Armed Forces Retirement Home in Washington, D.C., he served as Vice President of the SHA Tenant Council. Bill also hosted a cooking class twice a month and loved to share his skills and recipes with the residents and staff. Not long after he moved into Seneca Heights, Bill received a Housing Choice Voucher and now lives happily in his own apartment. Bill continues to work full-time as a cook at the Veterans' home and plans to come back to Seneca Heights from time to time to continue his cooking class.

# Public Education

The Coalition continued to act as a leader in the effort to raise awareness about homelessness in Montgomery County.

- Nine meetings were held educating our member organizations on issues ranging from domestic violence to co-occurring disorders. In February and April, in conjunction with the National Alliance to End Homelessness, we held special training sessions for local service providers on implementing a Housing First model, placing permanent housing at the core of homeless services. The April training focused on how to effectively use community resources and support to house families experiencing homelessness.
- Thousands of individuals, including 5,000 youth, were engaged through educational presentations at conferences, schools, universities, congregations and civic groups.
- In November, Otsuka America Pharmaceutical, Inc. sponsored a two-week series of radio spots on WTOP, WGMS, and WTWP highlighting the problem of homelessness in Montgomery County that reached more than 600,000 listeners.
- Coalition staff presented to numerous groups on the topic of homelessness including: the Community Development Block Grant hearing; the Council of Governments' Conference; the National Alliance to End Homelessness Conference; the Mental Health Advisory Committee; the Leadership Montgomery Class as part of a housing panel; and the Caregiver's Conference on Creative Housing Solutions.
- Coalition staff regularly assisted in specialized training for local police to sensitize them and help them deal more effectively with homeless citizens.



# MCCH Advocacy

Advocacy remained at the core of the Coalition's efforts to serve our community's homeless population and end homelessness in the county.



- Coalition staff testified to recommend essential changes to the Maryland State Senate Bill that would affect the existing state Rental Allowance Program. The Coalition advocated that not only should the state increase the production of affordable housing, but it should fund creative ways to make existing housing affordable to the residents of Maryland with very low incomes.
- Coalition staff testified at a number of local forums including County Council hearings. We were successful in advocating for \$500,000 to fund healthcare for the homeless as well as additional funding to create a county-run deep rental assistance program. Beginning in January 2007, the Supportive Housing Rental Assistance Program (SHRAP) will provide housing assistance and service coordination for low-income individuals and families with special needs.
- The Coalition advocated for and achieved support from the County Council for the expansion of the Partnership for Permanent Housing, doubling the program's existing capacity to serve over 105 households.
- Two Coalition clients participated in *Walk a Mile*, an innovative educational project run through the Community Action Board. This project attempts to bridge the gap between policymakers and their low-income constituents whose lives are directly affected by government policy but whose voices often go unheard.
- Coalition staff appeared on local radio and cable television stations appealing for broad-based support for our plan to end homelessness.
- Coalition staff were active participants in numerous county-wide committees dealing with issues that affect the homeless population, including: the Interagency Housing Task Force, the Criminal Justice Behavioral Health Initiative, the Co-occurring Disorders Steering Committee, the Co-occurring Disorders Trainers Group, Homeless Policy Development Committee, Adult Homeless Teaming Committee, Family Providers Team, Mental Health Provider Council, Community Action Board, the Commission on People with Disabilities Housing Subcommittee, and the St. Mark Mental Health Coalition.

# Coalition Events

**Help the Homeless** – Again this year, we are grateful to have been a part of the Fannie Mae Foundation’s annual Help the Homeless program that raises awareness and funds to prevent and end homelessness. Through this year’s program, the Coalition raised \$134,814 and engaged 5,000 youth through mini-walks, educational presentations and community service projects.



**Hoops for the Homeless** – We were honored to be chosen for the second year in a row as a beneficiary of Freddie Mac’s Hoops for the Homeless® basketball tournament. Our client basketball team, coached by a Coalition staff member, also participated in the tournament at the Verizon (MCI) Center. The Coalition received \$132,000 from this excellent event.



**ShelterWalk 'n Roll** – Our 10th annual ShelterWalk 'n Roll included a walkathon, live music of a dedicated local band, and activities for the entire family. Not only did we raise funds and awareness for people experiencing homelessness, but we had fun doing it! Thanks to the generous support of ShelterWalk 'n Roll 2006 sponsors and participants, the Coalition was able to raise over \$25,000.



**Whole Foods 5% Day** – The Coalition partnered with Whole Foods Market, Inc. to raise funds and give homeless children the opportunity to attend summer camp. On April 26, 2006, 5% of all sales at the Whole Foods Market in Rockville, \$3,911, were donated to the Coalition so that we could pay summer camp fees for children living at Seneca Heights Apartments.



## Condensed Statement of Activities and Changes in Net Assets

### Support and Revenue\*\*

Government Grants & Contracts	\$4,245,705
Individuals, Corporate & Foundations	\$ 555,201***
Program Income	\$ 355,862
Interest & Other Income	\$ 28,984

**Total Support and Revenue** **\$5,185,752**

### Expenses\*\*

#### Program Expenses

Safe Havens	\$1,310,413
Seneca Heights Apartments	\$ 951,914
Partnership for Permanent Housing	\$ 933,569
Men's Emergency Shelter	\$ 648,797
Hope Housing	\$ 586,382
Breaking Down Barriers	\$ 59,655
<b>Total Program Expenses</b>	<b>\$ 4,490,730</b>

#### Support Services Expenses

General and Administrative	\$ 248,876
Fundraising	\$ 62,308
<b>Total Support Services Expenses</b>	<b>\$ 311,184</b>

**Total Expenses** **\$4,801,914**

## Condensed Summary of Financial Position

### Assets

Cash	\$ 930,324
Receivables	\$ 830,921
Fixed Assets	\$1,152,942
Other Assets	\$ 23,950
<b>Total Assets</b>	<b>\$2,938,137</b>

### Liabilities and Net Assets

Current Liabilities	\$ 352,385
Long Term Liabilities	\$1,609,529
Net Assets	\$ 976,223
<b>Total Liabilities and Net Assets</b>	<b>\$2,938,137</b>

\* *The financial statements for the Montgomery County Coalition for the Homeless were audited by an independent auditor and are available in their entirety at the Coalition office.*

\*\* *Approximately \$250,000 of in-kind income and expenses are not included in these figures.*

\*\*\* *Includes donations released from purpose restrictions.*

# Treasurer's Report

As Treasurer of the Montgomery County Coalition for the Homeless Board of Directors, I am pleased to present the condensed financial results for the 2006 fiscal year. These results were taken from our financial statements that were audited by our independent auditor, Eric Bolin CPA, P.C., who issued an unqualified opinion on them.

The Coalition and its donors rose to meet the needs of increased numbers of people experiencing homelessness in our community. Two new projects were created, Breaking Down Barriers and the Homeless Outreach Project, as well as an affiliate organization, Coalition Homes, Inc. Paired with the Coalition's existing programs and services, these new initiatives extend the organization's commitment to good stewardship on behalf of our community's most vulnerable neighbors.

The Board of Directors continues to work closely with the Executive Director and staff of the Coalition in *Solving Housing Crises and Striving to End Homelessness in Montgomery County*. The Annual Report demonstrates the Coalition's fiscal health and effectiveness in utilizing its financial resources.

We offer thanks to all our partners for their generous support of the Coalition's mission to ensure that every person has the dignity of a home.



Yehuda Schmidt  
Treasurer  
MCCH Board of Directors

## Support and Revenue



- Government Grants and Contracts - **81.5%**
- Individuals, Corporate and Foundations - **11%**
- Program Income - **7%**
- Interest and Other Income - **0.5%**

## Expenses



- Safe Havens - **27%**
- Seneca Heights Apartments - **20%**
- Partnership for Permanent Housing - **20%**
- Men's Emergency Shelter - **14%**
- Hope Housing - **12%**
- Breaking Down Barriers - **1%**
- General and Administrative - **5%**
- Fundraising - **1%**

## The Coalition is grateful to the following donors who contributed \$100 or more for their generous support during fiscal year 2006.

We appreciate all who contributed their time, expertise, in-kind donations, and other financial resources without which our work would not be possible.

**Individuals** • Robert and Miriam Adelstein • Janet and Allan Akman • Richard Alper and Kate Herrod • Paul Andrews • Anonymous • G. Lawrence and Cornelia Atkins • Bob Atlas and Gloria Paul • Annella Auer • Mary Bailey • Stanley and Shelley Balis • Thomas and Martha Bartley • Julianne and George Baum • Charles Becker • Joshua and Amy Berman • Paul and Susan Berman • James Berry and Hali Edison • Arturo Betancourt and Lulu Delacre • Lynn M. Boiko • Robert and Cynthia Bonsib • Robert Borochoff • Cathy Bowe • Leonard and Frances Burka • Boyd and Marcella Burris • Robert and Elizabeth Carlin • Flavio Carsalade and Catherine Connor • Catherine Cleland • D. Faye Conley • A. P. Constant • Howard and Nancy Cooper • Gloria Coryell • Paul and Leonie Craig • Louise Crane • Malinda Dice-Shah, DDS • Kathy Donnelly • Michele Driscoll • Sarah Q. Duffy • David Dugoff and Victoria Bor • Robert and Debra Ekman • Dr. Steven Epstein • Blair Ewing and Martha Brockway • Christina and Robert Faass • Elizabeth Falloon • Robert and Betsy Feinberg • Kenneth and Lois Fischbeck • Stephen and Vicki Fisk • Virginia Fowler • Jeffrey and Inga Frank • Ellen S. Frantz • Verrick and Patricia French • Carol Fried and Andrew Mitz • Leslie and Richard Galen • Diane Garfield • Barbara Gentile • Dolbert and Nancy Ginsberg • Laurel Glassman and William Neff • James and Helen Goebel • Mildred Goeke • Elizabeth Goeke and Jay Billie • Anne Goldman • Richard and Shirley Grant • Michael and Sybil Greenhut • Benjamin Greenspoon • Bevin Grylack • Bruce and Sue Guenther • Brian and Lauren Harris-Kojetin • Todd and Elizabeth Harrison • Lewis Helm • Michael and Kimberly Hicks • Jim and Jean Hochron • Eugenia and John Horton • David and Catherine Hostetler • Adam Ishaek • James and Annemarie Ishikawa • Jeanne and Donald Jackson • L. Frances Jansen • Alexander and Hilary Joel • David and Susan Jones • Carol Jordan • Jane Josephs • James Karn and Dolores McDonagh • Barry Kasinitz and Carla Evans • Marvin and Toby Kaulkin • Helen Kavanagh • Claudia Kedda • Sam Kilpatrick and Douglas Barker • Joseph and Kathy Kolar • Nancy Kosinski • Cheryl Kreiser • Ruth Lammert-Reeves • Stephen and Jennie Lane • Neil and Ellen Lang • Roger Langsdorf • Mary and David LaRoche • Charles R. Larson • Christian Ledley and Jean Jarman • Leigh Leslie and Frederick Curdts • Neil Levy and Linda Perle • Donald and Carol Lipton • Hossein and Mojgan Loghman-Adham • Sharan and Howard London • Dorothy and Milton London • Marsha and Alfred Luce • James Lyles • Mary Anne Mahin • Jonathan and Julie Maltzman • Aris and Marianne Mardirossian • Fred and Mary Marinucci • Peter Mathers and Bonnie Beavers • James and Marjorie McMann • Robert and Patricia McNamara • Cindy and Howard Menditch • Duke and Sandra Mercer • Edward and Anne Metcalf • Maria Teresa Meyer • Dr. Laurence Miller • Muriel Miller Pear • Tracy Milosevich • William Mitchell and Rebecca Ross • Wendall and Jo Ann Mohr • Leo and Sarah Mondale • Edward and Susan Morris • Melvin and Sally Moskowitz • Ronald and Gloria Murad • Paul and Martha Nelson • Irwin Newman • Louisa Nickerson • Michael and Mary Owens • Eric and Jamie Padmore • Thomas and Jeanne Parker • Anne and C. Christopher Parlin • Arthur Parsons and Linda Beth Berman • Brenda and Paul Pascal • Carol Pearson • Michael and Ruth Pepper • Tom Perez and Ann Marie Staudenmaier • Lori Perine • Neale and Karen Perl • Eric Peterson •

Albin and Hermina Pfeifer • Laurence Platt and Elizabeth Herington • Lee and Ilene Plave • Abe and Irene Pollin • Frank and Jean Marie Porter • Robert and Susan Post • Louis Reggio • Susan Ronan and Anthony Tocci • Rose Saul • William Schaefer • Thomas and Beth Schmelzer • Robert Schmitz and Gale Held • Harold Segall and Lauren Gross • Richard and Betty Seidell • Morton and Bernice Shapiro • Howard Shapiro and Shirley Brandman • Charles and Lora Sheridan • Mary Ellen Signorille • Karen Nordstrom Sinderson • Robert and Barbara Smerko • Cathy Smith • Louis Solomon and Leslie Marks • Ian Spatz and Karen Orlansky • Michael and Beverly Stern • Paulette M.E. Stevens • Malcolm Stevenson • Alice Partee Stewart • Alan Strasser and Trisha Hartge • Dr. Irene Tamagna • Judy Tarr • Lawrence and Sandra Taub • Leonard and Martha Taylor • Mark Tenenbaum • James and Diana Thompson • Robert and Alice Ticehurst • Michael and Maureen Tomasulo • Donald Torr • Ronald and Agnes Trower • Suzy Tyburski • James and Pamela Van Prooyen • James and Andrea Virga • Tom and Lois Wall • Fred Walton • Karen Wassman • Cliff and Debbie White • Rebecca Williams • Alfred and Julia Wurglitz • Robin Zimmerman • **Congregations** • Ashton United Methodist Church • Cedar Lane Unitarian Universalist Church • Church of the Resurrection • Congregation Kol Shalom • Damascus United Methodist Church - Harwood House • Faith United Methodist Church • First African Methodist Episcopal Church • Global Mission Church • Kensington Baptist Church • Lutheran Church of St. Andrew • Millian Memorial UMC • New Hope Presbyterian Church • Oak Grove AME Zion Church • Our Lady of Grace Church • St. Francis Episcopal Church • St. John's Episcopal Church • St. Matthew Presbyterian Church • St. Paul United Methodist Church • St. Rose of Lima Catholic Church • Unitarian Universalist Church of Rockville • **Businesses and Corporations** • Carmot Strategic Group • Duffie, Inc. • East-West Oriental Medical Clinic • IBM Employee Charitable Contribution Campaign • Inside Mortgage Finance Publications, Inc. • Insurance Associates, Inc. • Jerunazagabr, LLC • Linowes and Blocher, LLP • Loiederman Soltesz Associates, Inc. • Marriott International, Inc. • Mid-Atlantic Dist. Inc. • Monument Construction, Inc. • Otsuka America Pharmaceutical, Inc. • Pascal & Weiss, P.C. • Porten Homes • Quantum Real Estate Management, LLC • R & F Metals, Inc. • Rhone Associates • Russell Corporation • Sandy Spring Bank • Seneca Land, LLC • Stax Research Inc. • Taconic Anmed • The Gallery at White Flint Place • Virion Systems, Inc. • Walter R. McDonald & Associates, Inc. • Whole Foods Market • Wilcoxon Construction, Inc. • **Schools and Organizations** • Damascus United Methodist Women • Leisure World Interfaith Committee for the Homeless • Temple Beth Ami Religious School • The Fig Tree • UFCW, Local 400 • Unitarian Universalists of Leisure World • Verizon TelecomPioneers, AGB Chapter • Washington Waldorf School • **Foundations** • Ceres Foundation • ExxonMobil Foundation • Fannie Mae Foundation • Freddie Mac Foundation • The Carl M. Freeman Foundation • The Gannett Foundation • Kecker Family Foundation • Mead Family Foundation • The Eugene and Agnes E. Meyer Foundation • The Pettit Family Charitable Foundation • The William S. Abell Foundation • **Public Funding** • City of Gaithersburg • City of Rockville • Federal Emergency Management Agency • Montgomery County Community Development Block Grants • Montgomery County Department of Health and Human Services • Montgomery County Department of Housing & Community Affairs • State of Maryland, Department of Human Resources • US Department of Housing and Urban Development

# Board of Directors

(as of 06.30.06)\*

## **Dan Mahoney, Chair**

NOI Hospitality

## **Elizabeth Homan, Vice-Chair**

Montgomery College

## **Yehuda Schmidt, Treasurer**

IBM Global Business Services

## **Charlie Eisenhauer, Secretary**

Unitarian Universalist Church of Rockville

## **Diana Bird**

Housing Opportunities Commission

## **Blair G. Ewing**

Montgomery College

## **Paul Goldman**

U.S. Securities & Exchange  
Commission

## **Bobbie Hart**

Adams National Bank

## **Jean Hochron**

U.S. Department of Health  
and Human Services

## **Amy Horton-Newell**

American Bar Association

## **Patrick Maier**

Innovative Housing Institute


## **Kathy Mitchell**

Kathy Mitchell, Inc.

## **Pinkney Spencer**

Community Volunteer

*\*Affiliations are for identification  
purposes only.*



*Congratulations to Joanne  
Stubbs, Clinton Wilson, Sharan  
London, Ron Hall, and Jim Russ  
on their ten years of service  
to the Coalition!*

# Coalition Staff

(as of 06.30.06)

## Administrative Office

Sharan London  
Julie Maltzman

Mike Greenhut  
Sarah Mahin  
Valerie Walker  
Jenny Willard

## Breaking Down Barriers

Carey Schneider

## Homeless Outreach

### Project

Deirdre Harris

## Men's Emergency Shelter

Ron Hall

Ronald Beckham  
Tyrone Boardley  
Jim Booker  
Edward Carter  
Walter Clark  
Emery Gerran-Davison  
Garry Hall  
John Hill  
Charles Hines  
Andrew Kridler  
Kwame Kyeremeh  
Francisco Lopez  
Theodore Lyles  
Gerald Marshall  
Portolese Mattocks  
Anthony Robinson  
Victor Rojas  
Carroll Shumpert  
Edmund Smith  
Dwayne Stewart  
Ace Thompson  
Anthony Walker

## Partnership for Permanent Housing

Alice Forcier

Chandra Harris  
Marie Pyne

## Safe Havens

Margaret Hobbs

Carolyn Amspaugh  
Melonie Campbell  
Anne Chapin  
Lisa Cook  
Maria Cole  
Jean Ekpenyong  
Pat Ellsbury  
Stephanie Everette  
Lee Jansky  
Tefaye Mekuria  
Jameelah Muhammad  
Velda Nzam  
Catherine Nzams  
Alexander Perry  
Juanita Reed  
Merchell Reedy  
David Roberts  
Jim Russ  
Rosa Sorrell  
Joanne Stubbs  
Sharon Taylor  
Rebecca Urban  
Sandra Wallace  
Jennifer Ward  
Rose White  
Lisa Wood

## Seneca Heights Apartments

Alice Forcier  
Renee Belisle

Amanda Cavin  
Allison Suarez-Charles  
Raymond Griffin  
Harold Jones  
Ernest Murray  
Nora Parker  
Veronica Pease  
Joseph Perry  
Elaine Sands  
Michael Shields  
Jerita Williams  
Clinton Wilson



montgomery county  
coalition for the homeless

600-B East Gude Drive  
Rockville, MD 20850  
301.217.0314  
301.217.0824 (fax)  
[www.mcch.net](http://www.mcch.net)



**Solving** Housing Crises  
and Striving to  
End Homelessness in  
**Montgomery County**