

HOMELESS TIMES



A publication of the Montgomery County Coalition for the Homeless

600-B East Gude Drive, Rockville, MD 20850

www.mcch.net

(301) 217-0314

Spring 2009

Heartening Community Support at Annual Celebrating Partnerships Event



Catherine Leggett kicks off the evening with a warm greeting and substantive remarks about homelessness in our community.



Mike Knapp accepts the Distinguished Service Award from George Leventhal, 2008's awardee, Sharan London, 2007's awardee, and MCCH board members.



Dick Pettit of the Pettit Family Charitable Foundation, the event's Underwriting Sponsor, and Patti Kane from the Home Builders Care Foundation.

The Montgomery County Coalition for the Homeless' (MCCH) *Celebrating Partnerships 2009* was an amazing event filled with appreciation, camaraderie and hope. Over 300 people gathered at the Bethesda North Marriott Hotel & Conference Center on Thursday, March 5th for MCCH's annual dinner recognizing the partners who make our work possible. More than \$65,000 was raised after expenses, which will enable MCCH to respond to the growing demands for services while remaining steadfast in our commitment to long-term solutions to homelessness. This outpouring of both financial and moral support for MCCH's event was particularly meaningful during these tough economic times.

Art Wallenstein, Director of the Department of Correction and Rehabilitation, summed it up best when he noted that, "The night was elegant, thoughtful, value-added, and thoroughly enjoyable. Frankly, it is one of the nicest events of the year – filled with meaning."

MCCH was once again honored to have Ike and Catherine Leggett serve as Honorary Co-Chairs. Mrs. Leggett graciously welcomed everyone to the event and acknowledged the contributions of many in attendance. Jeff Singer of Health Care for the Homeless of Maryland gave a moving speech about addressing homelessness at the community level. Mr. Singer used real life examples from his widely praised work in Baltimore to illustrate the importance of innovation, housing, dignity and patience when working with people experiencing homelessness.

Each year at *Celebrating Partnerships* we honor those who have made extraordinary contributions to our success. William Bakshi, a former resident of Seneca Heights Apartments, received the Distinguished Volunteer Award for teaching a monthly cooking class for the last two years. The Sharan London Distinguished Service Award was presented to Mike Knapp, whose steadfast dedication and hard work has led to real advancements in Montgomery County's effort to end homelessness. The Home Builders Care Foundation received the Distinguished Partner Award for their decade-long partnership with MCCH (see pages 4-5 for more details on this remarkable partnership).

Near the end of the evening, Event Co-Chair and MCCH Board Member Laura Cecala encouraged everyone to "imagine not having a home to go to tonight. When we do, we are reminded about the reasons why so many work so hard to collaborate and advocate for those experiencing homelessness."

MCCH extends a special and heartfelt thanks to all of our sponsors and supporters who contributed to a dynamic evening.

[Board Of Directors](#)

Elizabeth Homan, Chair, Montgomery College
 Chuck Covell, Vice-Chair, Covell Communities, LLC
 Amy Williard, Treasurer, The Monitor Group, LLC
 Jean Hochron, Secretary, U.S. Department of Health and Human Services

Gloria Aparicio Blackwell, University of Maryland
 Dr. Allison Bryant, The Assignment Group
 Laura Cecala, Inside Mortgage Finance Publications, Inc.
 John Cresham, Freddie Mac
 Bobbie Hart, Adams National Bank
 Amy Horton-Newell, American Bar Association
 Jon Newhard, Infonic
 Dr. Guy Williams, Parker Memorial Baptist Church

[Executive Team](#)

Sharan London, Executive Director
 Julie Maltzman, Deputy Director for Programs

[Coalition Homes, Inc.](#)

John Enagonio, Director of Real Estate
 Charlene Cochran

[Creative Housing Initiative Pilot Project \(CHIPP\)](#)

Carolyn Amspaugh, Program Director
 Eduardo Obregon, Nili Soni

[Development & Communications](#)

Sarah Mahin, Director of Development & Communications
 Teri Brenits, Sarah Churchill, Cynthia Cotte Griffiths, Kathleen Spain

[Finance & Administration](#)

Joanne Lam, Controller
 Anuradha Basu, Jacqueline Ginsburg Havens, Randy Popick,
 Jacob Schans, Irene Tsang

[Home First](#)

Alice Forcier, Director of Housing Solutions
 Keesha Barksdale, Jennifer Blackwell, Dedrick Makle

[Home Builders Care Assessment Center \(HBCAC\)](#)

Darrell Butler, Program Director
 Ron Hall, Program Manager
 Kemba Arthur, Ronald Beckham, Albree Bell, Darron Carter, Erin Collick, Ann-Marie Coore, Melvina Crockett, Clifton Crosby, W. Doyle Currey, Yolanda Dickerson, Howard Duvall, Valerie Gibson, Kevin Goodman, Jeffrey Grace, Trudy Haqq, John Harriday, John Hill, Charles Hines, Kevin Johnson, Derrick Knox, Kwame Kyeremeh, Lizka Lasso, Samuel McNiell, Kimberly Mouzan, Forrest Offord, Jacob Roames, Anthony Robinson, Victor Rojas, Allen Rose, Dwayne Stewart, Ace Thompson, Larry Williams, Gregory Wiseman, Sandra Woodward

[Partnership for Permanent Housing](#)

Anne Donohue, Program Director
 Chandra Harris, Assistant Program Director
 Marc Bowman, Maria Cueto, Lauren Harper, Esther Ihionu, Karla Lawrence, Jose Manabat, Cassie Masters, Jequira Smith

[Safe Havens](#)

Carolyn Amspaugh, Program Director
 Bernard Arulnathar, Charlene Bright, Cynthia Burley, Christine Cable, Anne Chapin, Maria Cole, Lisa Cook, Jean Ekpenyong, Stephanie Everette, Lee Jansky, Teddy Lyles, Tesfaye Mekuria, Jameelah Muhammad, Catherine Nzams, Velda Nzams, Mary Olisa, Juanita Reed, David Roberts, Jim Russ, Rosa Sorrell, Joanne Stubbs, Sharon Taylor, Sandra Wallace, Rose White, Lesa Wood, Kim Younger

[Seneca Heights Apartments](#)

Alice Forcier, Director of Housing Solutions
 Cynthia Rebholz, Assistant Program Director
 Maame Addy, Sharleen Andrews, Walter Clark, Latavia Graham, Raymond Griffin, Mario Lagman, Salvador Maldonado, Eduardo Obregon, Nora Parker, Benedicte Tshandiru, Nadine Wall, Jennifer Ward, Clinton Wilson

Volunteer Opportunities with MCCH

MEALS! Providing hot meals and bag lunches at the Home Builders Care Assessment Center (formerly known as the Men's Emergency Shelter) remains a top volunteer priority. We need to provide breakfast, lunch and dinner to approximately 60 men a day during the warmer months. These meals are almost entirely made possible through the generosity of community members and groups that are willing to purchase the ingredients, create and then deliver the meals. Volunteers delivering hot meals also have the option to serve the meal, which is a recommended and rewarding experience!

Vocational Mentors! We are currently looking for friendly, dependable professionals with good communication skills to volunteer their time to the Back-to-Work project. This project provides vocational counseling and job skills training for homeless men to help them exit homelessness through employment and increased income. Mentors will meet regularly with their mentee to discuss topics essential to employment preparedness and retention.

Tutors! The Back-to-Work project will soon be offering GED and ESOL classes to residents of the Home Builders Care Assessment Center (HBCAC). We are looking for adults who are willing to volunteer their time and provide one-on-one tutoring to men taking a GED or ESOL class. The level of education and language skills vary a great deal amongst HBCAC residents. Training will be provided and previous experience is preferred, but not required.

Building Community! Can you teach knitting or yoga? Can you babysit to allow parents exiting homelessness a night out to get to know their neighbors and to start creating the "village" in which to raise their children? Let us know what your ideas are and we will try to incorporate your skills into the mission of *Solving Housing Crises and Striving to End Homelessness*.

Please note all in-kind donations and volunteer activities must be scheduled in advance through the Community Outreach Coordinator, Teri Brenits. Teri can be reached at teri@mcch.net or call 301-217-0314 ext. 120.

Thank you!

Letter from the Board Chair

Dear Friends of MCCH,

Thank you for supporting the Montgomery County Coalition for the Homeless. While I am the new board chair, I have served on the board for nearly six years and supported MCCH's mission for many more. I want to thank outgoing MCCH Board Chair Dan Mahoney for his leadership and service to the organization.

My first introduction to MCCH came in the late 1990s when I was a television reporter at Cable News 21. With the station's location off of Standish Place, I was within walking distance of MCCH's Home Builders Care Assessment Center (formerly known as the Men's Emergency Shelter). I reported on the need for improved housing for the men, who were at that time sleeping on the floor of a trailer. It was incredibly moving to see men thankful for a blanket and shelter from the snow, but they deserved better accommodations. I remember the excitement of Sharan London, MCCH's executive director, when the organization learned that a permanent shelter would be constructed with the assistance of Montgomery County and the Home Builders Care Foundation, and the sheer joy of Sharan, her staff, and the men when they cut the ribbon to open the new shelter.



The Montgomery County Coalition for the Homeless has undergone tremendous change since that memorable day – the opening of Seneca Heights Apartments, the success of the Partnership for Permanent Housing program, and the creation of the Home First program. Recently, MCCH has come full circle from my first days with the organization. A new addition to the men's shelter opened, providing additional space for residents to receive job training, health care, and counseling services; and enjoy each other's company separate from the sleeping quarters.

None of this growth and change could have occurred without the support of MCCH's partners — individuals who dug deep into their pockets each winter to ensure that we could provide assistance, businesses who collect goods for our clients or donate money, and organizations such as the Home Builders Care Foundation that gave generously to build the original shelter and its recent addition.

The Montgomery County Coalition for the Homeless cannot serve the homeless and formerly homeless men, women, and children in Montgomery County without your help. You make it all possible.

While I know that the economy has everyone concerned, you can imagine the impact on a family that is barely making ends meet. One day they may have an apartment; the next day they could be our clients. MCCH is dedicated to meeting emergency needs as they arise, and the organization, its staff, and its board remain committed to providing long-term solutions to ending homelessness in Montgomery County.

We believe everyone deserves the dignity of their own home, and with your help, we will reach our goal.

Thank you,

A handwritten signature in cursive script that reads "Elizabeth S. Homan". The ink is dark and the signature is fluid and legible.

Elizabeth Homan
Board Chair

Home Builders Care Foundation (HBCF), the charitable affiliate of the Maryland-National Capital Building Industry Association (MNCBIA), is one of MCCH's most significant and valued partners. Our partnership began in the mid-1990s when HBCF, then called Operation Tom Sawyer Foundation, donated and installed new linoleum flooring for the bathroom in Adrienne's Safe Haven. A decade later, HBCF has played an integral role in the construction of a safe, humane shelter for homeless men and the development of permanent supportive housing. HBCF has donated over \$1,000,000 in goods, services and cash to assist MCCH in making vital projects a reality. The unflagging commitment of HBCF and its building industry members has dramatically changed the lives of many people who have experienced homelessness in our community. For these reasons, Home Builders Care Foundation was the recipient of MCCH's 2009 Distinguished Partner Award. We are honored to have HBCF as our partner and look forward to working together again to benefit men, women and children experiencing homelessness in our community.

Dale Drive Apartments

Permanent Supportive Housing for Chronically Homeless Adults



Exterior view of Dale Drive Apartments.



A kitchen pre-renovation.



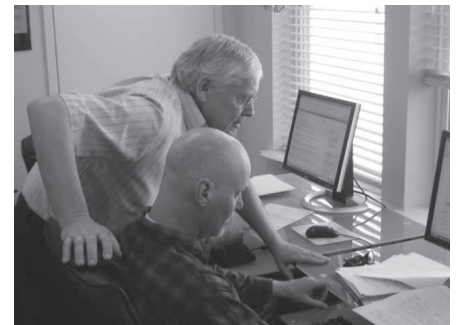
The same kitchen post-renovation.

HBCF teamed up with MCCH in 2007 to develop permanent supportive housing for disabled adults who have experienced homelessness for long periods of time. Led by builder captain Maryland Development Co. LLC/Ridan Builders Inc., HBCF contributed \$200,000 of in-kind labor and materials and cash contributions to renovate a vacant three-story brick building in Silver Spring. Dale Drive Apartments now offers eight one-bedroom units for single adults as well as access to a range of services providing residents the opportunity to live with stability, autonomy, and dignity.

HBCF has received local and national recognition for its role in the Dale Drive Apartments project. On January 15, 2008, the Montgomery County Council issued a proclamation recognizing HBCF for its contributions to the project. The National Housing Endowment presented HBCF and MNCBIA with the *Association Excellence Award for Best Community Service Project Conducted* for the Dale Drive Apartments renovation project. This prestigious national award was accompanied by a \$1,000 donation to MCCH in support of the Home First program, which operates Dale Drive Apartments.

HBCF Funds New Back-to-Work Project

MNCBIA and HBCF surprised MCCH at *Celebrating Partnerships* last month with a \$12,000 donation in support of the Back-to-Work project at the Home Builders Care Assessment Center (HBCAC). This new project offers HBCAC residents on-site vocational counseling and job training to help them obtain and maintain employment and exit homelessness. This generous donation was made in memory of MNCBIA's late comptroller, Al Pence. Mr. Pence's invaluable guidance and expertise was especially helpful to HBCF during the construction of the original shelter in 2000. A plaque will be installed in the new vocational lab to honor Mr. Pence's legacy and inspire Back-to-Work participants with his strong work ethic and benevolence.



Vocational Counselor Doyle Currey helps a HBCAC resident conduct a job search.

Home Builders Care Assessment Center *(formerly the Men's Emergency Shelter)* Emergency Shelter and Supportive Services for Homeless Men

In the late 1990s, HBCF learned that homeless men were sleeping on floor mats in three trailers at MCCH's Gude Drive complex. They quickly initiated their largest project to date, offering to help build a state-of-the-art facility for homeless men. The 5,800 sq. ft. building provided room for 100 men to sleep, bathroom and laundry facilities, and space for food to be offered and case management services delivered. HBCF's contribution to the project cut the \$1 million construction costs in half.

Demand for shelter by homeless men grew significantly after the facility's completion in 2000. To meet the immediate need, a trailer was brought back on campus and MCCH operated a satellite site during the winter months. In late 2006, MCCH approached HBCF about the possibility of partnering to build an addition to the original building. HBCF quickly agreed to help construct a 3,780 sq. ft. addition and Winchester Homes served as the builder captain.

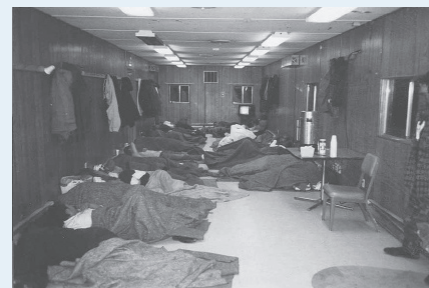
The facility's new addition was completed in January 2009. It provides space for a range of on-site services including new laundry, bathroom and shower facilities, two medical exam rooms, and a meeting space and computer lab for educational and vocational activities. The on-site trailer that served as overflow sleeping space for 35 men has been closed, and there are now 35 new beds in the building.

MCCH unveiled the new name of the Men's Emergency Shelter – the Home Builders Care Assessment Center – at *Celebrating Partnerships 2009*. Sharan London, MCCH's executive director, explained to event attendees why MCCH chose to honor HBCF in this way:

As you all well know by now, the Home Builders Care Foundation has been instrumental in the development of our Men's Emergency Shelter. From being a trailer where men were given a space on the floor in the winter to becoming a multi-service facility where homeless men can come and not only seek respite, but also get the help they need to get back on their feet and into permanent homes. This progress – and the thousands of men who benefit from it – would not have been possible without the Home Builders Care Foundation.



Councilmember Nancy Floreen joined MCCH and HBCF staff and board members to unveil the facility's new name.



The trailers offered substandard shelter for homeless men (1998).



The facility built in 2000 by HBCF drastically improved conditions for homeless men in Montgomery County.



HBCF constructed a 3,780 sq. ft. addition to meet increased demands for shelter and services.



The addition includes two medical exam rooms.

MCCH thanks the following donors for their generous contributions.

MCCH is only able to include donations of \$100 or more.

All donors are truly appreciated, and each gift makes a real difference in lives of people experiencing homelessness.

Special thanks to all the sponsors of Celebrating Partnerships 2009

Underwriting Sponsor (\$25,000)

Pettit Family Charitable Foundation

Advocate (\$5,000)

BAE Systems

GEICO

The J. Willard and Alice S. Marriott Foundation

Shearman & Sterling LLP

Partner (\$2,500)

Guy and Laura Cecala

Chevy Chase Land Company

Fannie Mae

The JBG Companies

Kaiser Permanente

McShea Management

Otsuka America Pharmaceutical, Inc.

Supporter (\$1,000)

Amberlea Photography & Design

Artisan Partners Construction Services

Capital Video Resumes

Covell Communities, LLC

McCormick Paints

The Monitor Group, LLC

PNC

Nanci J. Porten

Sandy Spring Bank

Stu Hershey, Urban Ventures, Inc.

Wiencek + Associates

Table Sponsor (\$1,250)

City of Rockville

Department of Housing & Community Affairs

Home Builders Care Foundation

Housing Opportunities Commission

Aris and Marianne Mardirossian

Maryland National Capital Park and

Planning Commission

A Wider Circle

Organizations

AARP

Academy of the Holy Cross

Affordable Housing Corporation

Alexander & Associates LLP

America's Charities

Booz Allen Hamilton

Community Ministries of Rockville

Costco

DRS Signal Solutions Inc.

Fidelity Advisor Charitable Gift Fund

Hope International Christian Fellowship

IBM Employee Charitable Contribution Campaign

Insurance Associates, Inc.

Interfaith Committee for the Homeless

Interfaith Works

J.M. Huber Corporation

JustGive

Kiwanis Club of Rockville

Lessard Group

Linowes and Blocher, LLP

Lockheed Martin Corporation

Mental Health Association of

Montgomery County

Mobile Medical Care, Inc.

Montgomery Alliance for Community Giving

Monument Construction, Inc

National Alliance to End Homelessness

National Housing Endowment

Network for Good

Newland Communities Mid-Atlantic

P.J. McTavish & Co., Inc.

Pascal & Weiss, P.C.

PC Connection, Inc.

PricewaterhouseCoopers LLP

Ralph J. Duffie, Inc

Shepherd's Table

SunTrust Bank

Taconic

TD Bank

The Donohoe Companies, Inc.

United Way of the National Capital Area

Verizon TelecomPioneers, AGB15 Chapter

Virion Systems, Inc.

Volunteers of America of Chesapeake

Wilcoxon Construction, Inc.

Wiley Rein LLP

Wootton High School

Government Agencies

City of Gaithersburg

Department of Correction and Rehabilitation

Department of Health and Human Services

Montgomery County Council

Office of the County Executive

Congregations

Ashton United Methodist Church

Church of Christ the King

Church of the Resurrection

Damascus United Methodist Church - Harwood House

Damascus United Methodist Women

Emory Grove United Methodist Church

Geneva Presbyterian Church

New Hope Presbyterian Church

Our Lady of Grace Church

Potomac United Methodist Women

Salem United Methodist Church

St. Francis Episcopal Church

St. John Neumann Catholic Church

St. John's Episcopal Church

St. Matthew Presbyterian Church

St. Patrick's Catholic Church

Foundations

Carl M. Freeman Foundation

Community Foundation for the National Capital Region

Jim and Carol Trawick Foundation

Montgomery County Community Foundation

Philip L. Graham Fund

TD Charitable Foundation

The Harry and Jeanette Weinberg Foundation, Inc.

Venable Foundation

Individuals

Dick and Linda Abbott

Karen and Suheil Abdulnur

JR Abinader

Frances Abrams

Koki Adasi

Robert and Miriam Adelstein

Allan and Janet Akman

Elena Alvarez

Carolyn Amspaugh

Anonymous

Tracy J. Antonuccio

Gloria Aparicio Blackwell

David and Deborah Astrove

G. Lawrence and Cornelia Atkins

Bob Atlas and Gloria Paul

Annella Auer

Carl and Irene Auvil

Jack Baer and Susan Condraski Baer

Stephen and Kate Baldwin

Daniel and Nancy Balz

Marjorie and Harley Balzer

Andrew W. Barnes

Joan Barron and Paul Lang

Susan and Gene Bechtel

Daniel Becker and Martha Toll

John and Melissa Beckwith

Mira Bengen

Paul Bennett and Carol Herndon

Christine Dorothy Berg

Mark D. Bergal

Gary and Carol Berman

Lahouaria Berrabah

Arturo Betancourt and Lulu Delacre

Eric Biel and Dana Rosenfeld

Robert and Margaret Blair

Robin Block

Eric Bolin CPA PC

Robert Borochoff

Margaret Boverman

Bernice and Joel Breslau

Samuel and Gail Broder

Geoffrey Burkhart

Boyd and Marcella Burris

Kathleen and Richard Bush

Barbara Butrica

Gertrude Campbell

Gregory and Patricia Campbell

Robert and Suzanne Carbone

Robert and Elizabeth Carlin

Flavio Carsalade and Catherine Connor

Judy Temple Carter

Stephen and Margaret Ayers Case

Ted Chamberlain

Jenny Chen

Michael Chernick

Wallace and Edith Ching

Richard E. Chipkin

Ruth Cipolla

Kenneth Coffey

Marie and Thomas Cohen

Jackson Copley

Sarah Corbett

Brian M. Cox

John and Nia Cresham

Jason Dahl and Elizabeth Garrison

Shirley Daniels

Richard and G. Joyce Darilek

JC and Barbara Davies

Daniel Davis and Suzanne Schmidt

Jeffrey and Tamara Dierman

Alan L. Dodd

Charleen Dornheim

Debbie Driesman and Frank Islam

David Dugoff and Victoria Bor

Robert and Mary Eager

Masoud Edalatkah

David and Vivian Edfors

W.Sherman Edwards and

Melina Salzman

Charlie Eisenhauer

Robert and Debra Ekman

Jonathan Elkind and

Suzanne Mintz

Dr. Steven Epstein

John and Elizabeth Erickson

Josephine Farwell

Thomas and Margaret Fears

Eva and Ned Feder

Richard and Pamela Feinstein

David and Jodi Fields

Joshua Flaherty

Sam Fleming

Alice and Ronald Forcier

R. Scott and Gail Fosler

Jeffrey and Inga Frank

Allan and Judith Freedman

Carol Fried and Andrew Mitz

Gerald and Evelyn Friedman

Stephen and Sharon Friedman

Piotr and Tisha Gajewski

Laurene Gallo

Diane Garfield

Rosalynd Garfinkel

Anne Gavin

Lisa S. Gelb

Barbara Gentile

Dalbert and Nancy Ginsberg

Laurel Glassman and William Neff

Lawrence A. Glick

William and Linda Goldman

Mary T. Goodson

William and Gail Gorham

Michael and Suzan Gove

George Green

Michael and Sybil Greenhut

Jerry Greenspan

Bryan F. Griffin

Cindy and Charles Griffiths

Bevin and L. Grylack

Carl H. Gunderson

Clifford Hall

Geoff and Serene Hammond

Margaret Hansen

Robert and Katalin Hardi

Brian and Lauren Harris-Kojetin

Bobbie Hart

Patricia Harvey

Frank and Lauren Hatten

Judith Hautala

Melissa Hayes-Gehrke

Lisa Henderson

Terry and Mary Herndon

Matthew and Noelle Heyman

Jim and Jean Hochron

Maj. Gen. Authur and Wilma K. Holmes

Elizabeth Homan

Jill Homan

Barbara and Kenneth Homon

Judy Honig

Amy Horton-Newell and Craig Newell

David and Catherine Hostetler

John Houston III

John and Jean Hubbell

Kent and Virginia Hughes

Cathleen Irish

Raymond and Laura Jacobson

Robert Jambou and Diana June Blalock

L. Frances Jansen

Alexander and Hilary Joel

Gordon and Cynthia Johnston

Kuriacose and Tara Joseph

Jane Josephs

Jerome and Deena Kaplan

John and Diane Karlik

Stephen and Sharon Kaufman

Barbara A. Kaufmann

Charles and Patricia Kengla
 Sheila Kessinger
 Sam Kilpatrick and Douglas Barker
 Joseph and Kathy Kolar
 Jeffrey and Sondra Komarow
 Nancy Kosinski
 Steve Kunin and Anne Thompson
 Hanns Kuttner and Rebecca Blank
 Timothy Lacy
 Ruth Lammert-Reeves
 Stephen and Jennie Lane
 Roger Langsdorf
 Keith and Robin Lawson
 Michael and Rebecca Layous
 Christian Ledley and Jean Jarman
 Leroy and Elizabeth Leon
 Betty Levine
 Linda Levine and Stu Hershey
 Neil Levy and Linda Perle
 Peggy Lewis
 Carolyn Lichtenstein
 G. Griffith and Emily Lindsay
 Steven Linscheid
 Ace and Linda Lipson
 Elliot and Sandy Liss
 David and Linda Little
 John Logsdon
 Sharan and Howard London
 Pamela Loprest and Hugh Courtney
 Joseph and Veronica Fellerath Lowell
 Marsha and Alfred Luce
 Raymond and Janet Luczak
 Jim and Shirley Lyles
 Solange MacArthur
 Mary Anne Mahin
 Dan and Reedy Mahoney
 Jonathan and Julie Maltzman
 H. George and Marianne Mandel
 Ellen Mansueto
 Robert Mapou
 Fred and Edith Marinucci
 Bradford and Albine Martin
 Clarice Mayers
 Thomas and Linda McCabe
 James and Marjorie McMann
 Ann Medinger and Sean Beeny
 Michael Mendelevitz and Louise Berke
 Dr. Laurence Miller
 Muriel Miller Pear
 William Mitchell and Rebecca Ross
 Christian Mixer and Linna Barnes
 Wendall and Jo Ann Mohr
 Elizabeth T. Mooney
 Timothy Moore
 Helen Morey
 Bruce Moyer and Ruth Lampi
 Ronald and Gloria Murad
 Ellen and Jim Myerberg
 Anastase and Carmen Nakassis
 Evaline Neff
 Jon Newhard and Evelyn Gerson
 Phyllis Nicholson
 Louisa Nickerson
 Barry W. Nishikawa
 Ernest Nussbaum
 William B. Oakcrum
 Judith S. Olmer
 Barbara Orlans
 David and Glenna Osnos
 Thomas and Jeanne Parker
 Brenda and Paul Pascal
 Bud and Carol Pearson
 Christine L. Pellicoro
 Bernard Perella
 Albin and Hermina Pfeifer
 Lona and Joram Piatigorsky
 Robert and Melba Piersma
 Joan Planell and Robert Kirkhorn
 Laurence Platt and Elizabeth Clare
 Herington

Abe and Irene Pollin
 Laura Pompa
 Robert and Susan Post
 Andrew Poulos
 Richard and Lynne Power
 James and Emily Pugsley
 Gary and Judy Quintiere
 Richard and Barbara Racine
 Pearl Radcliffe
 Ayoub and Roya Rashtchian
 Marti Raub
 Rebecca Rawls
 Arthur and Suzanne Reed
 Paul and Patricia Reichler
 Richard and Loretta Reinersmann
 Dr. Nader Rezvani
 Rhonda Richards
 Barrett and Marilyn Ripin
 William and Donna Roberts
 John and Patricia Robinson
 Marcus and Theresa Roder
 Marvin and June Rogul
 Elaine Ron
 Margaret W. Root
 Lawrence Rosenblum and Nancy Brooks
 Gerald and Claire Rupert
 Charles and Camilla Russell
 Steven Sachs and Kim Dettlebach
 Louis and Barbara Samels
 Peggy Rae Sapienza
 John and Heather Satrom
 Terry Savage and Dwight Onley
 Gertrude G. Scanlan
 Jacob and Olga Schans
 Yehuda and Tammy Schmidt
 Robert Schmitz and Gale Held
 Imogene Schneider
 Christian and Natalie Schoeberlein
 Leonard and Celia Schuchman
 Nancy Schulze
 Pat Scissors
 Andrea Sedlak
 Leonard B. Seeff
 Paula Segal and Eric Schweitzer
 Harold Segall and Lauren Gross
 Raymond and Charlotte Seltser
 Daniel and Rose Shames
 Howard Shapiro and Shirley Brandman
 Mikhail Shenderey
 Charles and Lora Sheridan
 Jonathan Sherman and Catherine Foot
 Todd Canfield Sherwood
 Jerry and Cathy Shier
 Martin and Carol Shulman
 Stanley and Bena Siegel
 Mary Ellen Signorille
 Daniel and Sybil Silver
 Thomas and Karen Sinderson
 Donald and Tina Slater
 Matthew Slater and Faith Roessel
 Robert and Barbara Smerko
 Daniel Smith and Patricia Burns-Smith
 Stephen and Tanya Spano
 Ian Spatz and Karen Orlansky
 Thomas Frank Specht
 Arusha and Anandhi Stanislaus
 Howard and Leslie Stein
 Corinne Stevens and Aston Irving
 Malcolm Stevenson
 Alice Partee Stewart
 Stewart and Jane Bainum
 John Stewart and Sharon Stolaroff
 Eleanor Stoddard
 Alan Strasser and Trisha Hartge
 Richard and Martha Strombotne
 John and Rauna Surr
 Dr. Irene Tamagna
 Joseph and Carolyn Tanis
 Edgar and Mary Taplin Jr.
 Lawrence and Sandra Taub

Bob and Betsy Taylor
 Len and Martha Taylor
 Phillipa Taylor
 Mark Tenenbaum
 Paul and Lauren Thomas
 Robert and Alice Ticehurst
 Michael and Maureen Tomasulo
 Robert and Laurie Trippett
 Theresa A. Tropin
 James and Andrea Virga
 Elisse B. Walter
 Richard Wardwell
 Karen Wassman
 Raymond and Anne Watts
 Jane G. Weiman
 David and Kathie Weinberg
 Irma Westrell
 Cliff and Debbie White
 Ann Wild
 Peter Bennett Williams

Rebecca Williams
 Roger Williams and Virginia
 Macomber
 Amy and Stephen Williard
 Barbara and John Wing
 Kevin and Lucy Winkler
 C. Lawrence and Mary Ellen
 Wiser
 Mark Wolff and Marilyn
 Kresky-Wolff
 James and Harriet Wright
 Margaret Wright
 Alfred and Julia Wurglitz
 Philip and Shirley Yaffee
 Scott and Emily Yinger
 Mark Young and Rachel Carren
 John Zinner
 Fred and Mary Jane Zusy

In Honor of

Steve Agee by Judy and Steve Groban.
 Juanita Alvarez by Ann M. Sprague.
 Mr. and Mrs. Barry Bogage by Joseph and Shirley Bogage.
 Martha Brockway by Blair Ewing
 Margery Brodsky by Julia Schwarz.
 Judith Bucci by Ann M. Sprague.
 Jori Ellis and David Nettleton by Dr. Phyllis Kaplan.
 Blair Ewing by Martha Brockway.
 Vicki Fisk by Patricia Friedman and Blair Levin.
 Alice Forcier by Margery Brodsky.
 Kathleen Johnson by Ann M. Sprague.
 Mr. and Mrs. Wilton Kennedy by WM.H. and Coryne Melton.
 Jacqui Kneipple by William Granik.
 Marilyn Lehrer by Ann M. Sprague
 George Leventhal's speedy recovery by Roger Berliner, Chris Gillis,
 and Sharan and Howard London.
 Sharan London by James Karn and Dolores McDonagh.
 Virginia Macomber by Ashley Williams.
 Julie Maltzman by Marty Lederman and Lauren Rothfarb.
 Brendan Ogg by Sharan and Howard London.
 Paul B. Puckett by Brian and Cissel Collins.
 Jamie and Sarah Raskin by Ray Boedecker.
 Jim Russ' Wedding by Rotraut Bockstahler, and Michael and Sybil
 Greenhut.
 Sharon Schaffer by Ann M. Sprague.
 Michael Tomasulo by Michael and Andrew McKeever.
 Nathaniel Wagner by Sharan and Howard London.
 Eileen Weber and Gloria Shepherd by Candace Groudine.
 Dr. and Mrs. Bruce Wilson by Dr. Phyllis Kaplan.
 Mr. and Mrs. Stephen Wilson by Dr. Phyllis Kaplan.

In Memory of

James B. Ashbrook by Karen Ashbrook and Paul Oorts.
 Harold Bush by Sharan and Howard London.
 Sam Chapman by Ann Chapman.
 Uncle Mack George by Dr. Vigen Simchian.
 Michael Grady by Jeffrey J. Griffiths.
 Robert L. Grant by Mark and Ruthanne Neely.
 Mildred Goeke by Mary Anne Mahin.
 Dirk Herderschee by Johannes and Gabrielle Herderschee.
 Stu Hershey's father by Jonathan and Julie Maltzman.
 Milton Laitman by Harriet T. Laitman.
 Janina Laks by Romana Laks Kaplan.
 Jane Lawton by Alan Banov.
 Christine Maier by Patrick and Kathleen Maier, and Alex Thompson.
 Timothy J. McCabe by Thomas and Linda McCabe.
 Karen Shprintz-Grossman by Shean and Susan Grossman.
 Ronda Stein by Paula and Barry Goldsmith.
 Jim Trawick by Sharan and Howard London.
 Esther Wasser by Sharan and Howard London.
 Bernie Witt by Sharan and Howard London.

Montgomery County Coalition for the Homeless
600-B East Gude Drive
Rockville, MD 20850

ADDRESS SERVICE REQUESTED

Nonprofit Org.
U.S. POSTAGE
PAID
Rockville, MD
Permit No. 4276

Please remember us through your workplace giving
campaign. We now participate in:



United Way
of the National Capital Area

United Way of the
National Capital Area
Code 8569

Maryland Charity
Campaign
Code 7185



Combined Federal
Campaign of the
National Capital Area
Code 40234